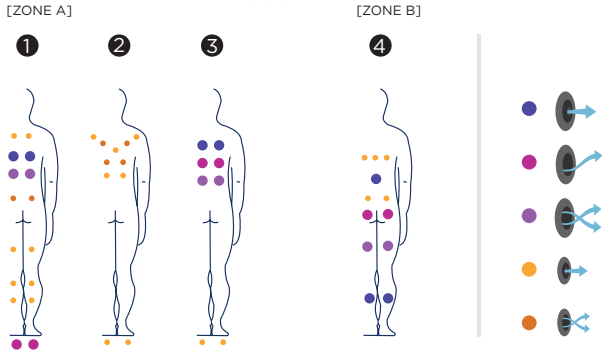
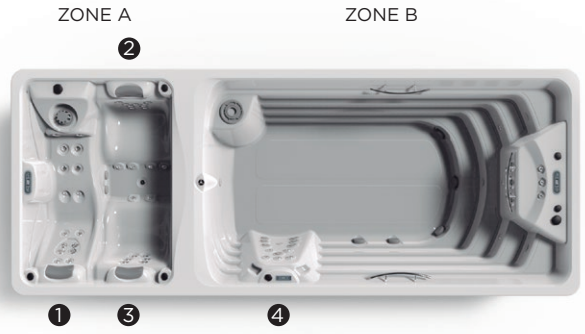


SWIMSPA DUO

The latest Swimspa is called Duo: two completely separate areas, to allow some of you to enjoy the “swim” version while others relax in the hot tub. After all, physical exercise, whether it be counter-current swimming or any other aqua fitness, activity, normally requires temperatures that are far lower than the hydromassage bathtub. Two ergonomic seats and a lounge on one side; five counter-current jets and a vertical hydromassage area on the other. They couldn't be better side by side.

Positions: 3 (2 / 1) Measures: 575 x 230 x 138





Duo Swimspa



Optional:





Swimsa Duo
69126

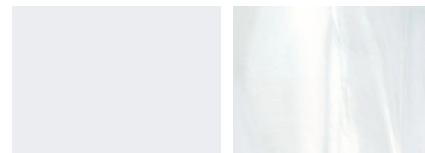
Technical specifications

	ZONE A (175 cm)	ZONE B (400 cm)
Measures (±2cm)	575 x 230 x 138	
Positions (seats/loungers)	3 (2 / 1)	1 (stand up)
Water capacity (l)	1.000	6.000
Weight (empty / full) (kg)	1.500 / 8.500	
Cabinet coating	Synthetic grey	
Urban outdoor cabinet (Warm Grey)	Optional	
Without cabinet	Optional	
Acrylic colours*	44 / 59 / 46	
FEATURES		
Total Massage Points	35	16
Massage Jets	35	16
Air Nozzles	-	-
Waterfall	-	-
Water fountains	-	3
Counter-current jets maximum flow rate	120 m3/h	
Headrests	3	-
Digital Control Panel	Principal	Principal + Aux
Ultraviolet Treatment UV	•	
Galvanised metal structure	•	
ABS base	-	
Energy Saving Cover	Included	Included
EcoSpa	Optional	
Nordic Insulation System	-	
FINISHES		
Colour Sense	1 LED + illuminated accessories	5 LED + illuminated accessories
Pure Line Lighting	-	
Bluetooth surround sound	Optional	
Stainless steel nozzles	•	
Woodermax Cabinet	-	
Stainless steel handrail	-	3 (Inside)
Aromatherapy	-	
Programmable WiFi Touch Panel	•	
MASSAGE PUMPS		
Water massage	2.200 W / 3 HP	3x 2.200 W / 3 HP
FILTRATION AND HEATING		
Recirculation pump	250 W	250 W
Water heater	3.000 W	3.000 W
Type of filter	1 Cartridge	1 Cartridge
High Performance Water Care	-	
POWER SUPPLY		
Power requirement LOW AMP (W) / (A) to 230 V	3.280 W / 14,3 A	7.000 W / 30,4 A
Voltage	230 V / 400 V III	

AQUAVIA SPA

Shell finishes

Acrylic colors



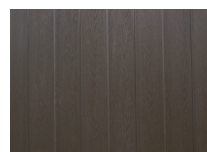
44 White

59 Sterling



46 Blue Marble

Furniture finishes



Synthetic Grey

Accessories



Swimsa Steps

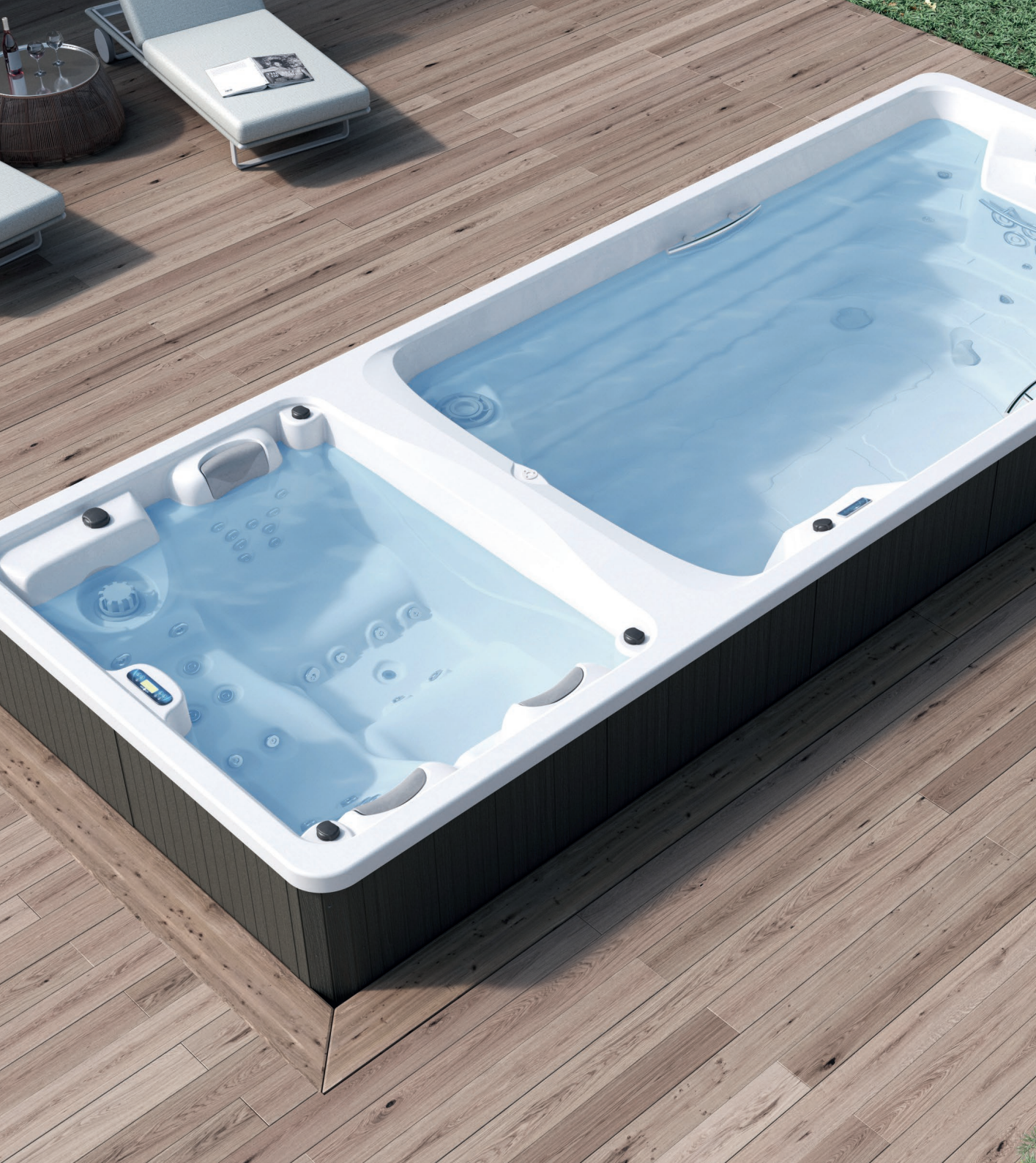


Water care



Aquabike

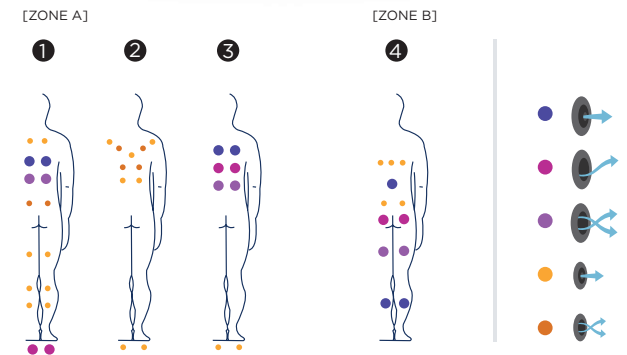
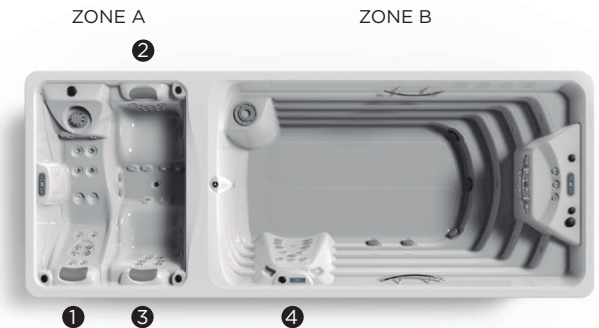
According to our policy of constant evolution, we reserve the right to modify the specifications in part or in whole without forewarning.

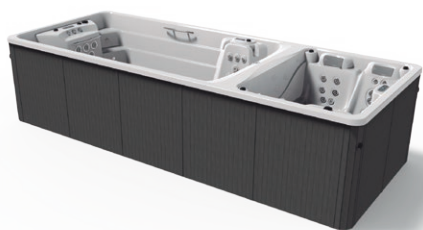


SWIMSPA DUO

La dernière nouveauté en matière de spa de nage s'appelle Duo : deux compartiments parfaitement indépendants, afin de profiter d'un côté de la version « nage » et de l'autre, se détendre dans le spa. En effet, les températures prévues pour l'activité physique, comme la nage à contre-courant ou toute autre activité d'aquafitness, sont en général bien inférieures à celles prévues pour l'hydromassage. Deux sièges ergonomiques et une chaise longue d'un côté ; cinq jets de contre-courant et un espace d'hydromassage vertical de l'autre. La cohabitation parfaite, en somme.

Positions: 3 (2 / 1) **Dimensions:** 575 x 230 x 138





Swimspa Duo



Option:



Caractéristiques techniques

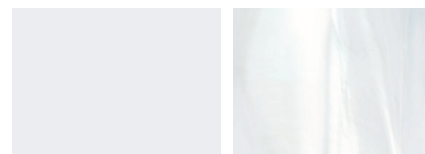
Swimsa Duo
69126

	ZONE A (175 cm)	ZONE B (400 cm)
Dimensions (±2cm)	575 x 230 x 138	
Positions (assises / allongées)	3 (2 / 1)	1 (debout)
Volume Eau (l)	1.000	6.000
Poids (vide / plein) (kg)	1.500 / 8.500	
Type finition habillage	Synthetic grey	
Habillage Urban (Warm Grey) pour extérieurs	Option	
Sans habillage	Option	
Couleurs Disponible*	44 / 59 / 46	
PRESTATIONS		
Total Points de Massage	35	16
Jets massage	35	16
Buse air	-	-
Cascades Eau	-	-
Water fountains	-	3
Débit maximal jets à contrecourant	120 m3/h	
Appui-tête	3	-
Panneau de Commande Numérique	Principal	Principal + Aux
Ultraviolet Treatment UV	•	
Structure Métal Galvanisé	•	
Base ABS	-	
Energy Saving Cover	Inclus	Inclus
EcoSpa	Option	
Nordic Insulation System	-	
FINITIONS		
Colour Sense	1 LED + Accessoires éclairés	5 LED + Accessoires éclairés
Pure Line Lighting	-	
Surround Bluetooth Audio	Option	
Buses Inoxydable	•	
Meuble Woodermax	-	
Barre Inoxydable	-	3 (interior)
Aromatherapy	-	
Touch Panel Programmable Wifi	•	
POMPES DE MASSAGE		
Massage d'eau	2.200 W / 3 CV	3x 2.200 W / 3 CV
FILTRATION ET CHAUFFAGE		
Pompe de recirculation	250 W	250 W
Chauffage d'eau	3.000 W	3.000 W
Type de filtre	1 Cartouche	1 Cartouche
High Performance Water Care	-	
COURANT ÉLECTRIQUE		
Puissance maximale LOW AMP (W) / (A) 230 V	3.280 W / 14,3 A	7.000 W / 30,4 A
Tension	230 V / 400 V III	

AQUAVIA SPA

Matériel des Spas

Couleurs Acrylique



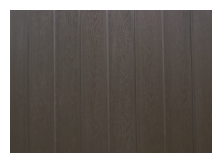
44 White

59 Sterling



46 Blue Marble

Bois des Spas



Synthetic Grey

Accessories



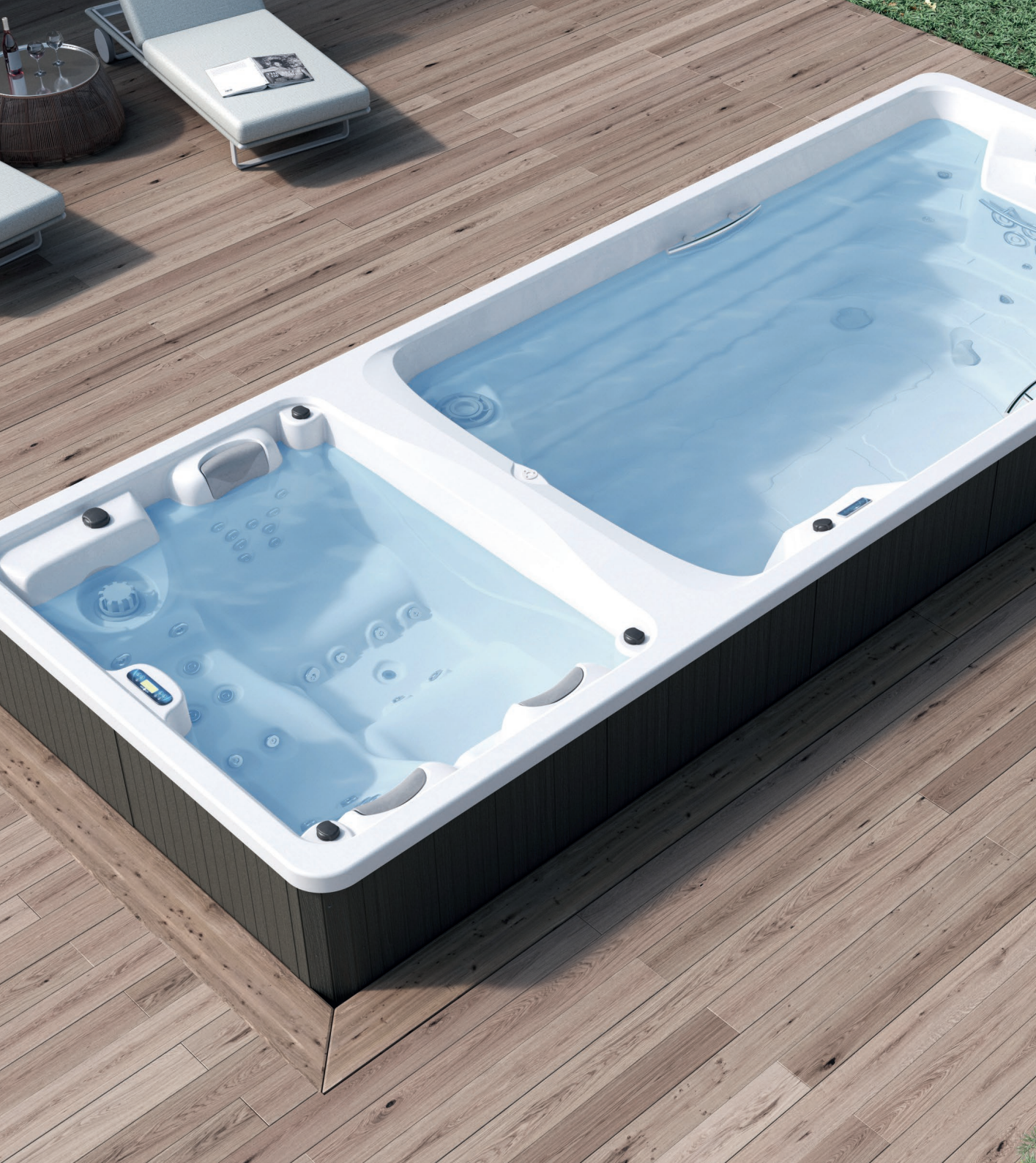
Escalier spa de nage



Kit de désinfection



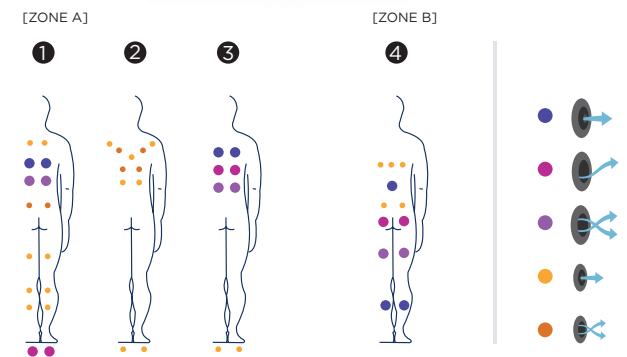
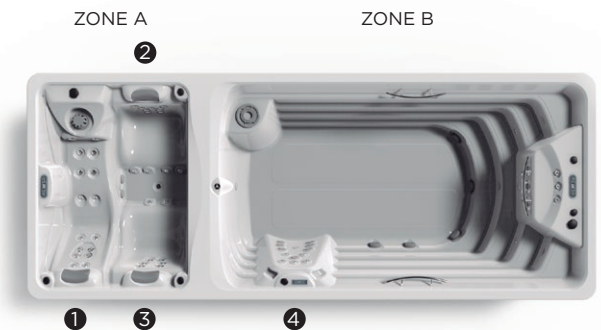
Aquabike



SWIMSPA DUO

Das neueste Produkt im Bereich Swimspa heißt Duo: Zwei vollständig voneinander unabhängige Einheiten, damit die einen im Spa schwimmen und die anderen im Spa entspannen können. Naturgemäß benötigen körperliche Übungen, wie das Gegenstromschwimmen oder jede andere Art von Aquafitness, sehr viel niedrigere Temperaturen als ein Hydromassagebad. Zwei ergonomisch geformte Sitze und ein Liegeplatz auf einer Seite; fünf Gegenstromdüsen und ein vertikaler Hydromassagebereich auf der anderen Seite. Nichts kommt der perfekten Einheit näher.

Positionen: 3 (2  / 1 ) **Dimensionen:** 575 x 230 x 138





Swimspa Duo



Option:





Swimsa Duo
69126

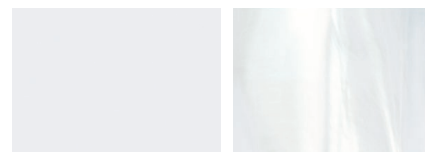
Ausstattung

	ZONE A (175 cm)	ZONE B (400 cm)
Abmasse (±2cm)	575 x 230 x 138	
Positionen (sitze/ liege)	3 (2 / 1)	1 (stehend)
Volumen (l)	1.000	6.000
Gewicht (leer/befüllt) (kg)	1.500 / 8.500	
Verkleidung	Synthetic grey	
Aussenverkleidung Urban (Warm Grey)	Option	
Ohne Rahmen	Option	
Acrylfarben*	44 / 59 / 46	
LEISTUNGEN		
Massagepunkte gesamt	35	16
Massagedüsen	35	16
Luftdüsen	-	-
Wasserfälle	-	-
Wasserquellen	-	3
Maximaler Durchfluss der Gegenstromdüsen	120 m ³ /h	
Kopfstützen	3	-
Digitales Bedienfeld	Haupt	Digitale Steuerung + Aux
Ultraviolet Treatment UV	•	
Verzinkter Metallrahmen	•	
ABS-Platte	-	
Energy Saving Cover	Enthalten	Enthalten
EcoSpa	Option	
Nordic Insulation System	-	
UNTERHALTUNG		
Colour Sense	1 LED + Beleuchtungszubehör	5 LED + Beleuchtungszubehör
Pure Line Lighting	-	
Surround Bluetooth Audio	Option	
Düsen Edelstahl	•	
Woodermax Verkleidung	-	
Edelstahlstange	-	3 (Innenausstattung)
Aromatherapie	-	
Touch Panel Programable Wifi	•	
MASSAGEPUMPEN		
Wassermassage / Jetpumpe	2.200 W / 3 HP	3x 2.200 W / 3 HP
FILTER UND HEIZUNG		
Silent Pump / Umwälzpumpe	250 W	250 W
Wasserrhitzer	3.000 W	3.000 W
Filtertyp	1 Kartuschenfilter	1 Kartuschenfilter
High Performance Water Care	-	
ELEKTRISCHE SPANNUNG		
Leistung Option niedrige Stromstärke (W) / (A) 230 V	3.280 W / 14,3 A	7.000 W / 30,4 A
Stromspannung	230 V / 400 V III	

AQUAVIA SPA

Ausführungstyp Becken

Acrylfarben



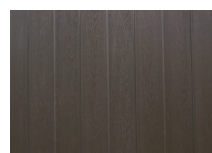
44 White

59 Sterling



46 Blue Marble

Ausführungen Verkleidung



Synthetic Grey

Zubehör



Swimsa Leiter

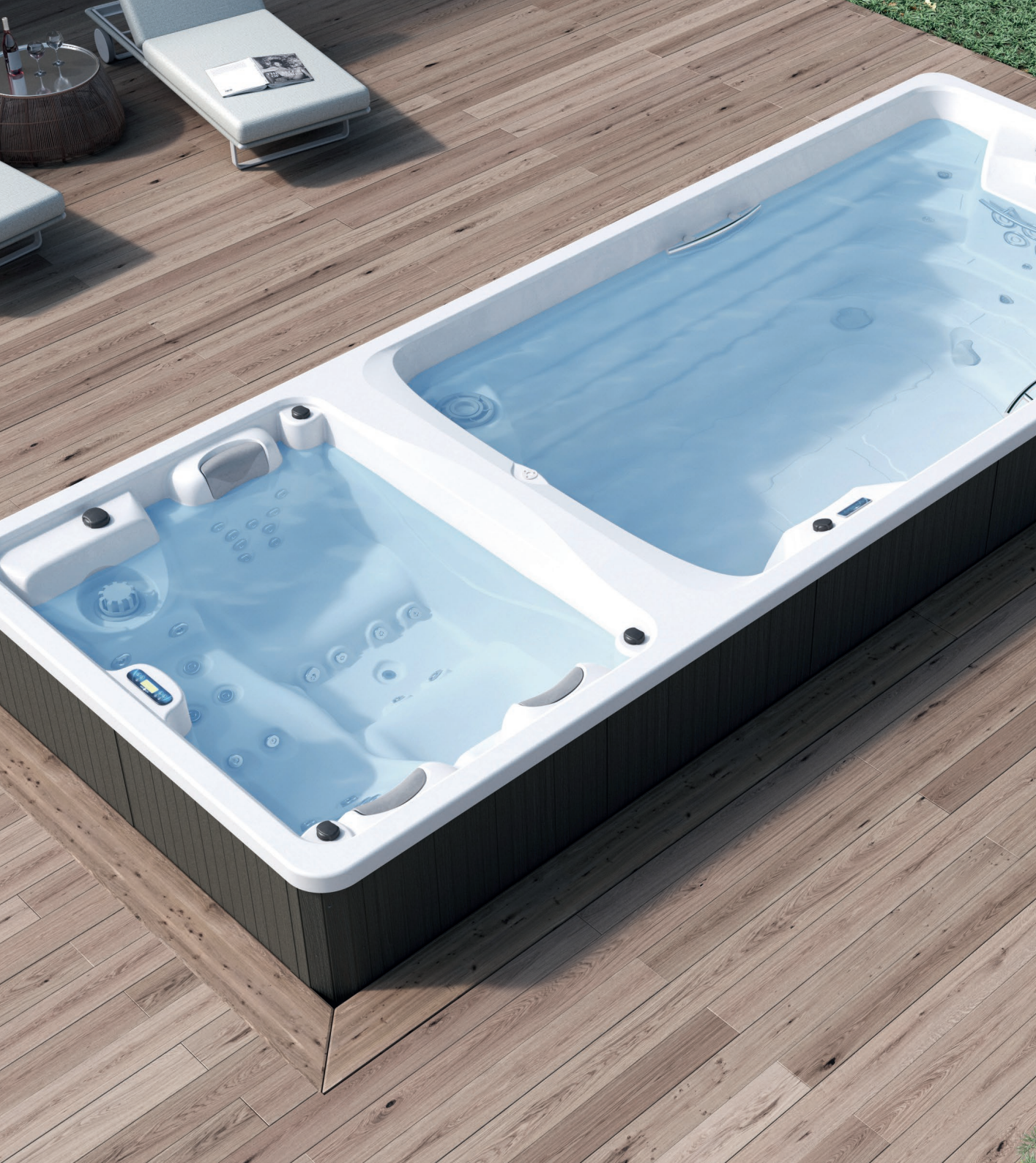


Desinfektionsset





Aquabike

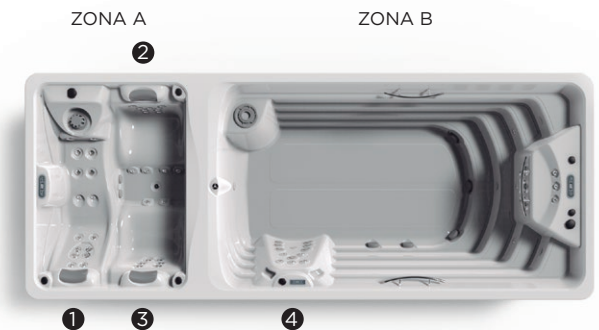
Im Rahmen unserer Bemühungen um ständige Verbesserungen behalten wir uns das Recht vor, ohne weitere Bekanntmachungen Änderungen an der Konstruktion und den technischen Daten vorzunehmen.



SWIMSPA DUO

Lo último en swimspa se llaman Duo: dos habitáculos completamente independientes, para que unos puedan disfrutar de la versión "swim" y otros relajarse en el spa. Y es que el ejercicio físico, ya sea el nado a contracorriente o cualquier actividad de aquafitness, habitualmente necesita temperaturas muy inferiores al baño de hidromasaje. Dos ergonómicos asientos y una tumbona en un lado; cinco jets contracorriente y un espacio de hidromasaje vertical en el otro. Nada más parecido a la convivencia perfecta.

Posiciones: 3 (2  / 1 ) **Medidas:** 575 x 230 x 138



[ZONA A]

1



2

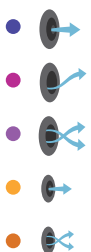


3



[ZONA B]

4





Swimspa Duo



Opcional:





Swimsa Duo
69126

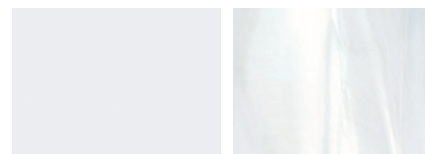
Características Técnicas

	ZONA A (175 cm)	ZONA B (400 cm)
Medidas (±2cm)	575 x 230 x 138	
Posiciones (sentado / tumbado / de pie)	3 (2 / 1)	1 (de pie)
Volumen Agua (l)	1.000	6.000
Peso (vacío / lleno) (kg)	1.500 / 8.500	
Tipo Revestimiento Mueble Exterior	Synthetic grey	
Mueble Exterior Urban (Warm Grey)	Opcional	
Sin revestimiento	Opcional	
Colores Acrílico	44 / 59 / 46	
PRESTACIONES		
Total Puntos de Masaje	35	16
Jets masaje agua	35	16
Boquillas masaje aire	-	-
Cascadas	-	-
Fuentes Agua	-	3
Caudal máximo jets contracorriente	120 m3/h	
Reposacabezas	3	-
Panel de Control Digital	Principal	Principal + Aux
Ultraviolet Treatment UV	•	
Estructura Metálica Galvanizada	•	
Base ABS	-	
Energy Saving Cover	Incluido	Incluido
EcoSpa	Opcional	
Nordic Insulation System	-	
ACABADOS		
Colour Sense	1 LED + Accesorios iluminados	5 LED + Accesorios iluminados
Pure Line Lighting	-	
Surround Bluetooth Audio	Opcional	
Jets/Boquillas Inoxidable	•	
Mueble Woodermax	-	
Barra Inoxidable	-	3 (interior)
Aromatherapy	-	
Touch Panel Programable Wifi	•	
BOMBAS DE MASAJE		
Masaje de agua	2.200 W / 3 CV	3x 2.200 W / 3 CV
FILTRACIÓN Y CALEFACCIÓN		
Bomba de recirculación	250 W	250 W
Calentador de agua	3.000 W	3.000 W
Tipo de filtro	1 Cartucho	1 Cartucho
High Performance Water Care	-	
CORRIENTE ELÉCTRICA		
Potencia requerida LOW AMP (W) / (A) a 230 V	3.280 W / 14,3 A	7.000 W / 30,4 A
Voltaje	230 V / 400 V III	

AQUAVIA SPA

Acabados Casco

Colores Acrílico



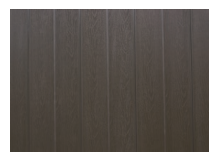
44 White

59 Sterling



46 Blue Marble

Acabados mueble



Synthetic Grey

Accesorios



Escalera Swimsa

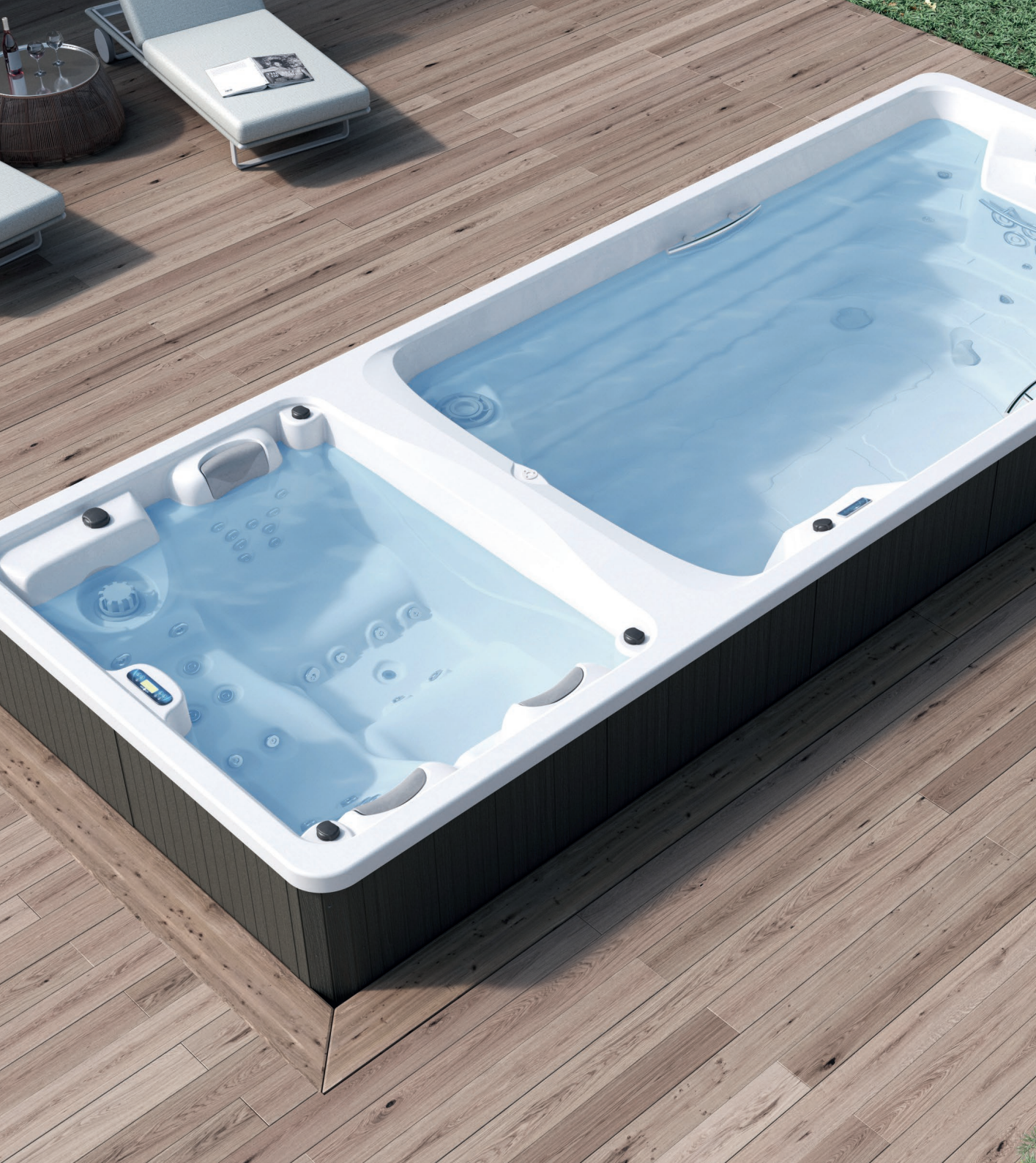


Kit de desinfección
para Swimsas



Aquabike

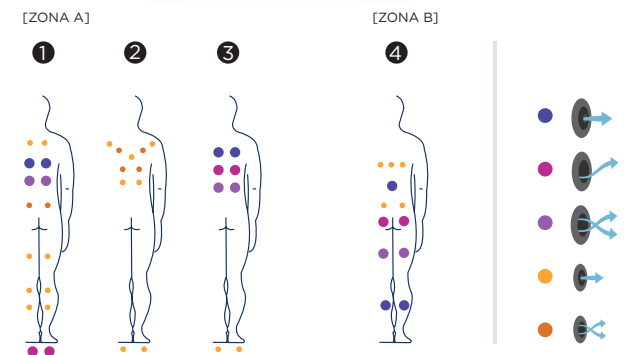
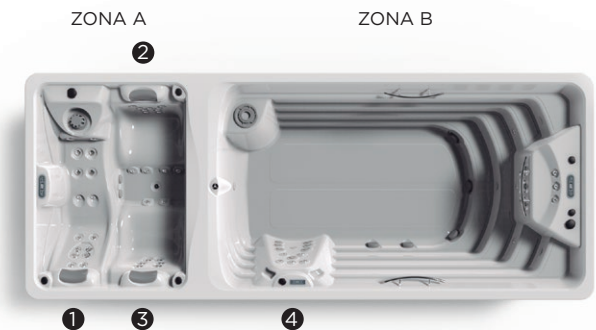
Como parte de nuestra política de mejoramiento continuo, nos reservamos el derecho de modificar el diseño y/o especificaciones sin previo aviso.

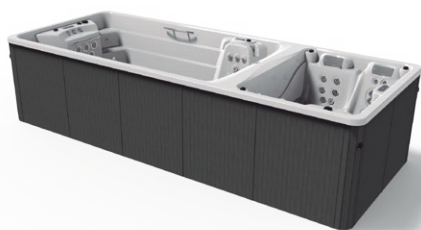


SWIMSPA DUO

L'ultima novità nel campo delle swimspa si chiama Duo: due zone del tutto indipendenti che consentono agli utenti di usufruire della versione "swim" e della zona relax della spa. Per dedicarsi all'esercizio fisico, al nuoto controcorrente o a qualsiasi attività di acquafitness sono necessarie temperature molto inferiori rispetto all'idromassaggio. Per questo motivo vi sono due sedute ergonomiche e uno sdraio da un lato e cinque getti controcorrente e uno spazio per idromassaggio verticale dall'altro. Il risultato è una convivenza assolutamente perfetta.

Posizioni: 3 (2  / 1 ) **Misure:** 575 x 230 x 138





Swimspa Duo



Opzionale:





Swimspa Duo
69126

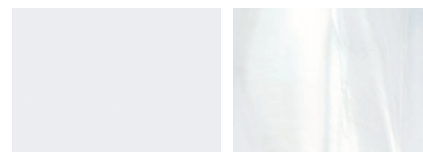
Caratteristiche tecniche

	ZONA A (175 cm)	ZONA B (400 cm)
Misure (±2 cm)	575 x 230 x 138	
Posizioni (seduto / sdraiato)	3 (2 / 1)	1 (1 in piedi)
Volume acqua (l)	1.000	6.000
Peso (vuota/piena) (kg)	1.500 / 8.500	
Tipo di rivestimento del mobile esterno	Synthetic Grey	
Rivestimento esterno Urban (Warm Grey)	Opzionale	
Senza rivestimento	Opzionale	
Colori Acrilico*	44 / 59 / 46	
PRESTAZIONI		
Totale punti di massaggio	35	16
Getti di massaggio	35	16
Bocchette di aria	-	-
Cascadas	-	-
Fontane d'acqua	-	3
Portata massima getti controcorrente	120 m ³ /h	
Poggiatesta	3	-
Pannello di controllo digitale	Principal	Principale + Ausiliario
Ultraviolet Treatment UV	•	
Struttura metallica galvanizzata	•	
Base ABS	-	
Energy Saving Cover	Incluso	Incluso
EcoSpa	Opzionale	
Nordic Insulation System	-	
FINITURE		
Colour Sense	1 LED + Accessori illuminati	5 LED + Accessori illuminati
Pure Line Lighting	-	
Surround Bluetooth Audio	Opzionale	
Jet/Bocchette Inossidabile	•	
Mobile Woodermax	-	
Barra inossidabile	-	3 (interno)
Aromatherapy	-	
Touch Panel Programable Wifi	•	
POMPE DI MASSAGGIO		
Massaggio ad acqua	2.200 W / 3 CV	3x 2.200 W / 3 CV
FILTRAGGIO E RISCALDAMENTO		
Pompa di ricircolo	250 W	250 W
Scaldacqua	3.000 W	3.000 W
Tipo di filtro	1 Cartuccia	1 Cartuccia
High Performance Water Care	-	
CORRENTE ELETTRICA		
Potenza necessaria LOW AMP (W) / (A) a 230 V	3.280 W / 14,3 A	7.000 W / 30,4 A
Tensione	230 V / 400 V III	

AQUAVIA SPA

Finiture della struttura

Acrylic colors



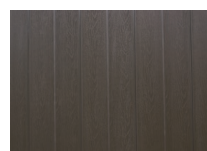
44 White

59 Sterling



46 Blue Marble

Finiture mobile



Synthetic Grey

Accessorios



Scaletta Swimspa

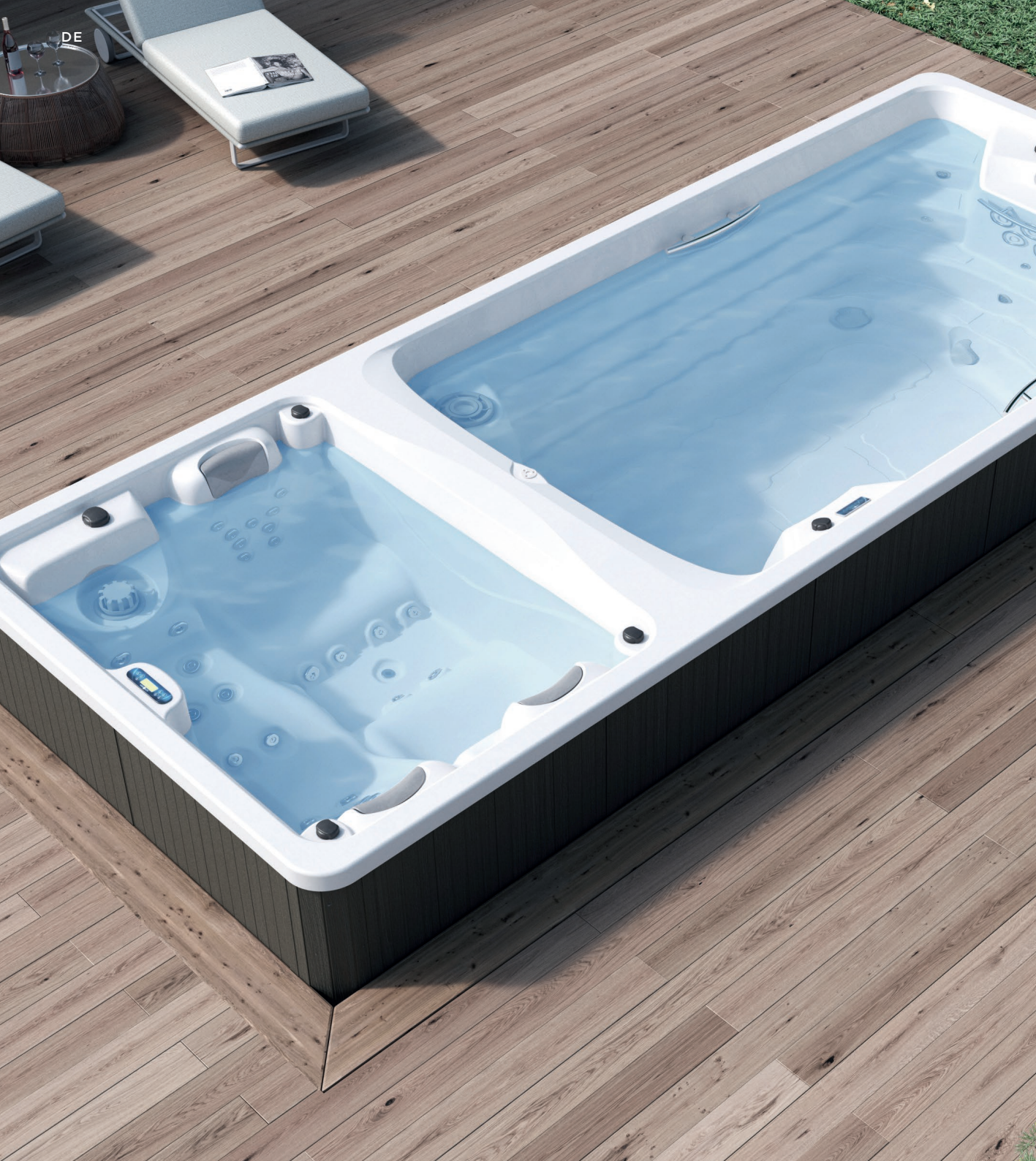


Kit di disinfezione



Aquabike

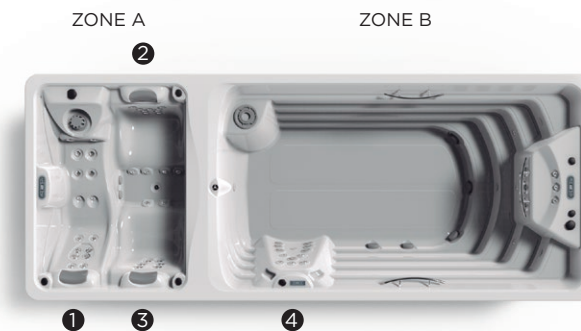
Come parte della nostra politica di miglioramento continuo, ci riserviamo il diritto di modificare il design e/o le specifiche tecniche senza preavviso.



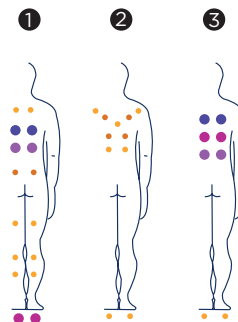
SWIMSPA DUO

De nieuwste trend in zwemspas heet Duo: twee compleet onafhankelijke baden, waarin de een kan genieten van de "swim"-versie en de ander kan ontspannen in de spa. Want lichaamsbeweging, of het nu om tegenstroomzwemmen of andere aquafitnessactiviteiten gaat, vereist normaal gesproken lagere temperaturen dan een jacuzzi. Twee ergonomische zitplaatsen en een ligstoel aan één kant; vijf tegenstroomjets en een verticale hydromassageruimte aan de andere kant. Een ongekend perfecte combinatie.

Posities: 3 (2  / 1 ) **Afmetingen:** 575 x 230 x 138



[ZONE A]



[ZONE B]





Swimspa Duo



Optioneel:





Swimsa Duo
69126

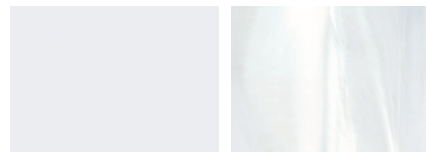
Technische eigenschappen

	ZONE A (175 cm)	ZONE B (400 cm)
Misure (±2 cm)	575 x 230 x 138	
Posizioni (seduto / sdraiato)	3 (2 / 1)	1 (de pie)
Volume acqua (l)	1.000	6.000
Peso (vuota/piena) (kg)	1.500 / 8.500	
Tipo di rivestimento del mobile esterno	Synthetic grey	
Rivestimento esterno Urban (Warm Grey)	Optioneel	
Senza rivestimento	Optioneel	
Colori Acrilico*	44 / 59 / 46	
PRESTAZIONI		
Totale punti di massaggio	35	16
Getti di massaggio	35	16
Bocchette di aria	-	-
Cascadas	-	-
Fontane d'acqua	-	3
Portata massima getti controcorrente	120 m3/h	
Poggiatesta	3	-
Pannello di controllo digitale	Principal	Hoofd + Hulp
Ultraviolet Treatment UV	•	
Struttura metallica galvanizzata	•	
Base ABS	-	
Energy Saving Cover	Inclus	Inclus
EcoSpa	Optioneel	
Nordic Insulation System	-	
FINITURE		
Colour Sense	1 LED + Verlichte accessoires	5 LED + Verlichte accessoires
Pure Line Lighting	-	
Surround Bluetooth Audio	Optioneel	
Jet/Bocchette Inossidabile	•	
Mobile Woodermax	-	
Barra inossidabile	-	3 (Interieur)
Aromatherapy	-	
Touch Panel Programable Wifi	•	
POMPE DI MASSAGGIO		
Massaggio ad acqua	2.200 W / 3 PK	3x 2.200 W / 3 PK
FILTRAGGIO E RISCALDAMENTO		
Pompa di ricircolo	250 W	250 W
Scaldaeacqua	3.000 W	3.000 W
Tipo di filtro	1 Patroon	1 Patroon
High Performance Water Care	-	
CORRENTE ELETTRICA		
Potenza necessaria LOW AMP (W) / (A) a 230 V	3.280 W / 14,3 A	7.000 W / 30,4 A
Tensione	230 V / 400 V III	

AQUAVIA^{SPA}

Afwerking

Acrylkleur



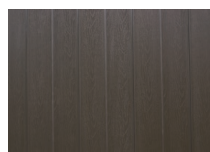
44 White

59 Sterling



46 Blue Marble

Raamwerkafwerking



Synthetic Grey

Accessoires



Swimsa Steps



Water care



Aquabike

Overeenkomstig ons beleid van voortdurende ontwikkeling behouden wij ons het recht voor om de specificaties geheel of gedeeltelijk te wijzigen zonder voorafgaande kennisgeving.