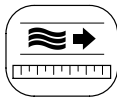
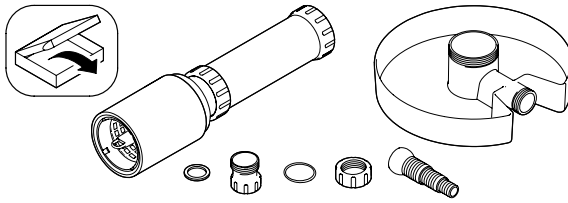




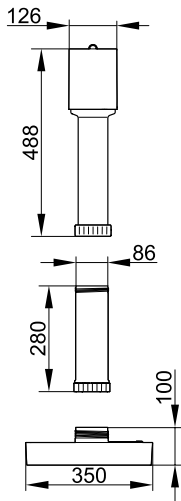
AquaSkim 20/40

DE	Gebrauchsanleitung
GB	Operating instructions
FR	Notice d'emploi
NL	Gebruiksaanwijzing
ES	Instrucciones de uso
PT	Instruções de uso
IT	Istruzioni d'uso
DK	Brugsanvisning
NO	Bruksanvisning
SE	Bruksanvisning
FI	Käyttöohje
HU	Használati útmutató
PL	Instrukcja użytkowania
CZ	Návod k použití
SK	Návod na použitie
SI	Navodila za uporabo
HR	Uputa o upotrebi
RO	Instrucțiuni de folosință
BG	Упътване за употреба
UA	Посібник з експлуатації
RU	Руководство по эксплуатации
CN	使用说明书

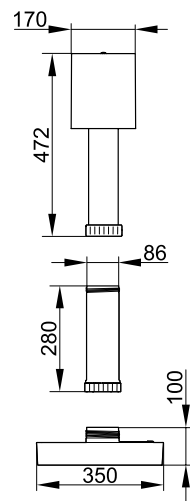




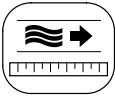
AquaSkim 20



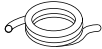
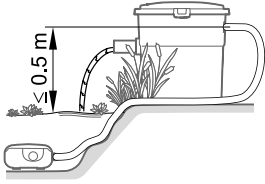


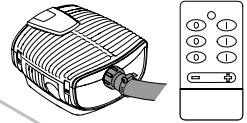
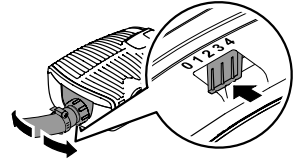
AquaSkim 40



ASM0001



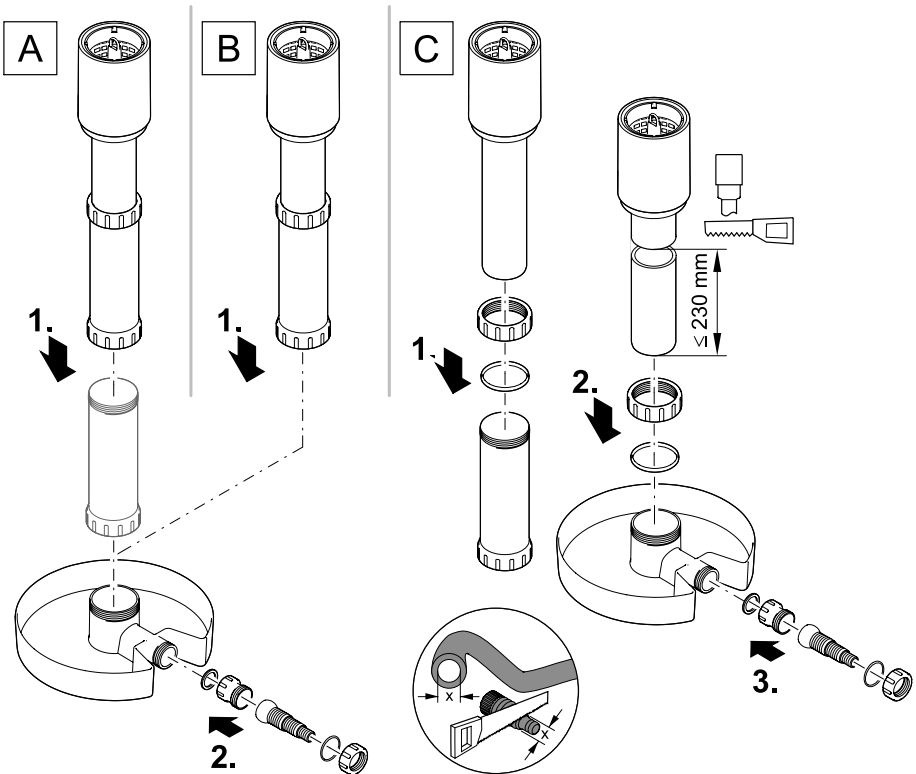
AquaSkim		20	40	
 m²		20 m²	40 m²	
		2000-6000 l/h	6000-16000 l/h	
AquaMax Eco	Premium	4000	3, 4	
		6000	2, 3, 4	
		8000	1, 2, 3	
		10000	1, 2	
		12000	–	
		16000	–	
	Twin	20000	–	min. 50 %
		30000	–	min. 50 %
		 $l \leq 3 \text{ m}$ $\varnothing 1.5''$		
				

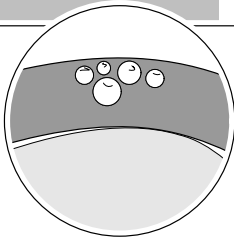
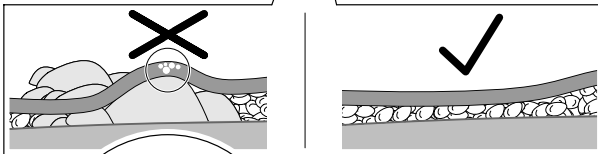
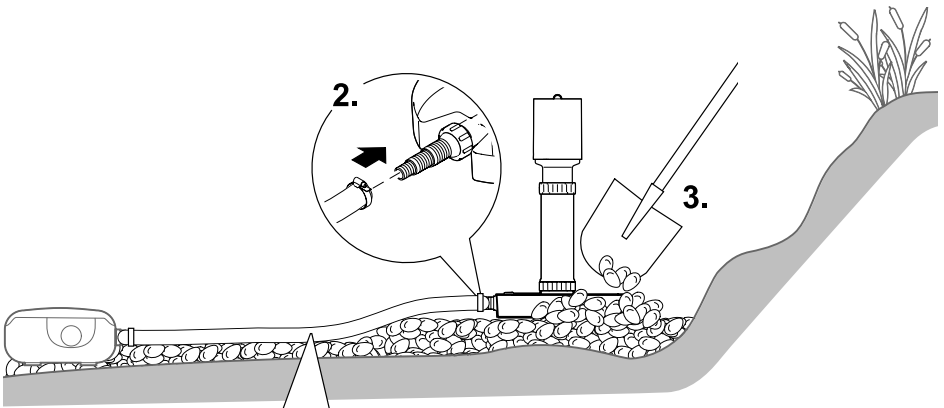
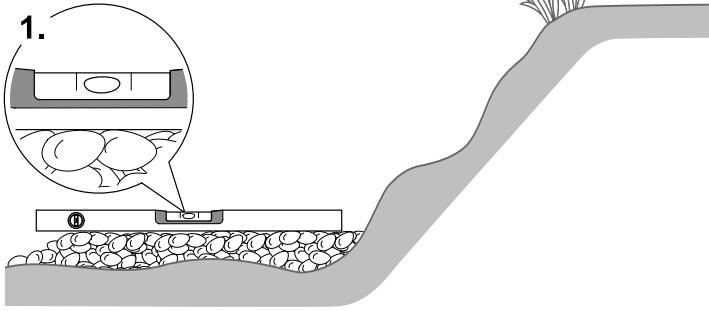


ASM0006



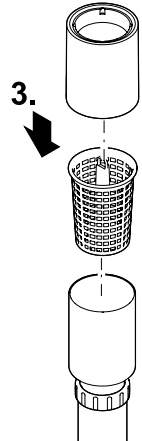
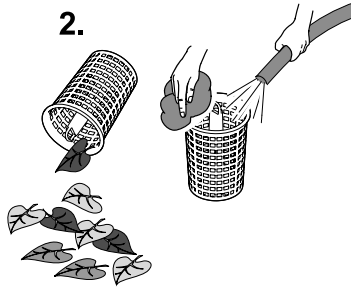
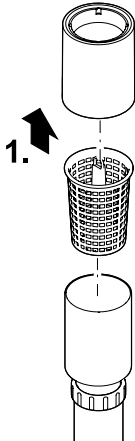
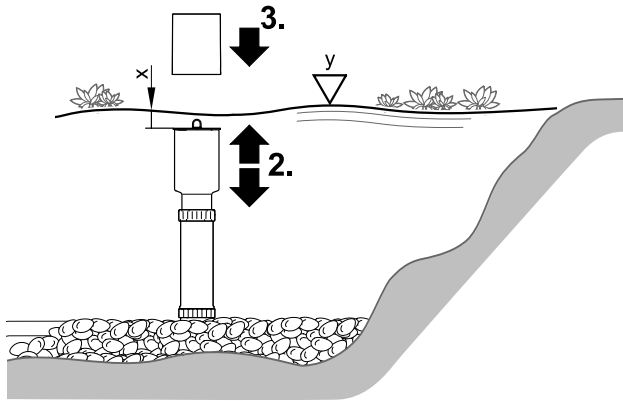
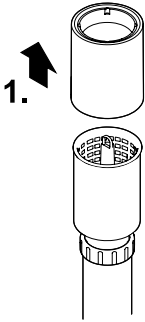
	[mm]		
AquaSkim	A	B	C
20	min. 850 max. 1070	min. 600 max. 850	min. 370 max. 600
40	min. 880 max. 1100	min. 630 max. 880	min. 380 max. 630
	 ID 35262		







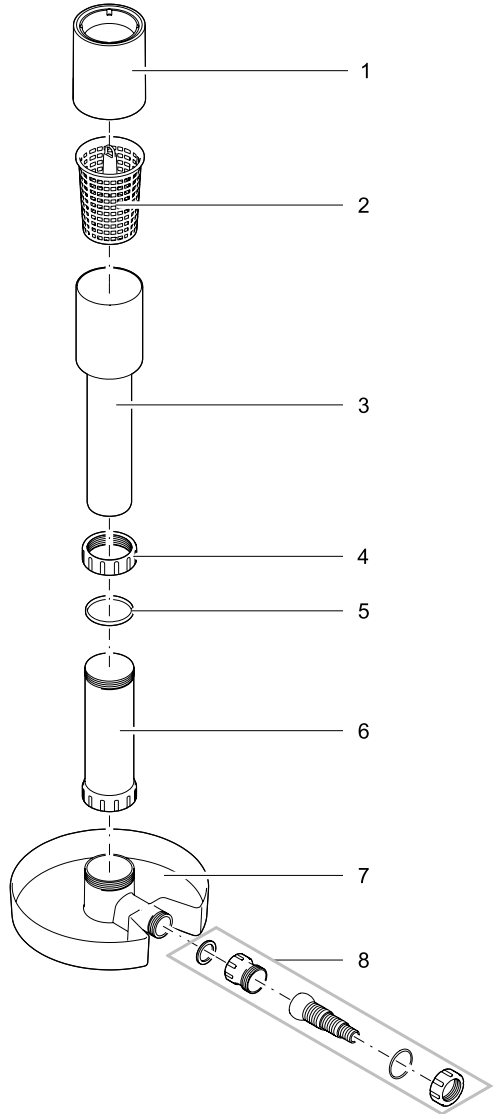
AquaSkim	x	y
20	60 mm	± 50 mm
40	75 mm	± 60 mm



ASM0004



Pos.	AquaSkim	
	20	40
1	21110	33284
2	21109	33285
3	21111	35263
4	35264	35264
5	26737	26737
6	35262	35262
7	27027	27027
8	35304	35304



ASM0005



OASE GmbH · www.oase-livingwater.com

Tecklenburger Straße 161 · 48477 Hörstel · Postfach 20 69 · 48469 Hörstel · Germany

21574/10H